

Category Placements

Open		Intermediate		Recreational		Youth	
Women		Women				Men & Women	
Marie Berry	10400	Louise Mallot	14150			Anthony Bauta	5900
Rachel Fox	6245	Kelcey Lynn	5600			alex beard	4805
		Taylor Wilcox	5600			retta Johnson	500
Men		Men		Men		Clifford Johnson	
Joseph Gifford	44150	Forrest Williams	14150	Michael Kneeland	6600		
Danny Aleksavski	36460	Craig Dye	12507.5	Shannon Ferrell	5525		
Elliot Knowles	16150	Tyler Daniels	10750	Ben Moreland	5450		
Collier Skinn	10400	Scott May	6745				
Aaron Wempe	9345						
Travis Johnson	4950						
Josh Bilberry	4950						
Robert Ycedo	4525						

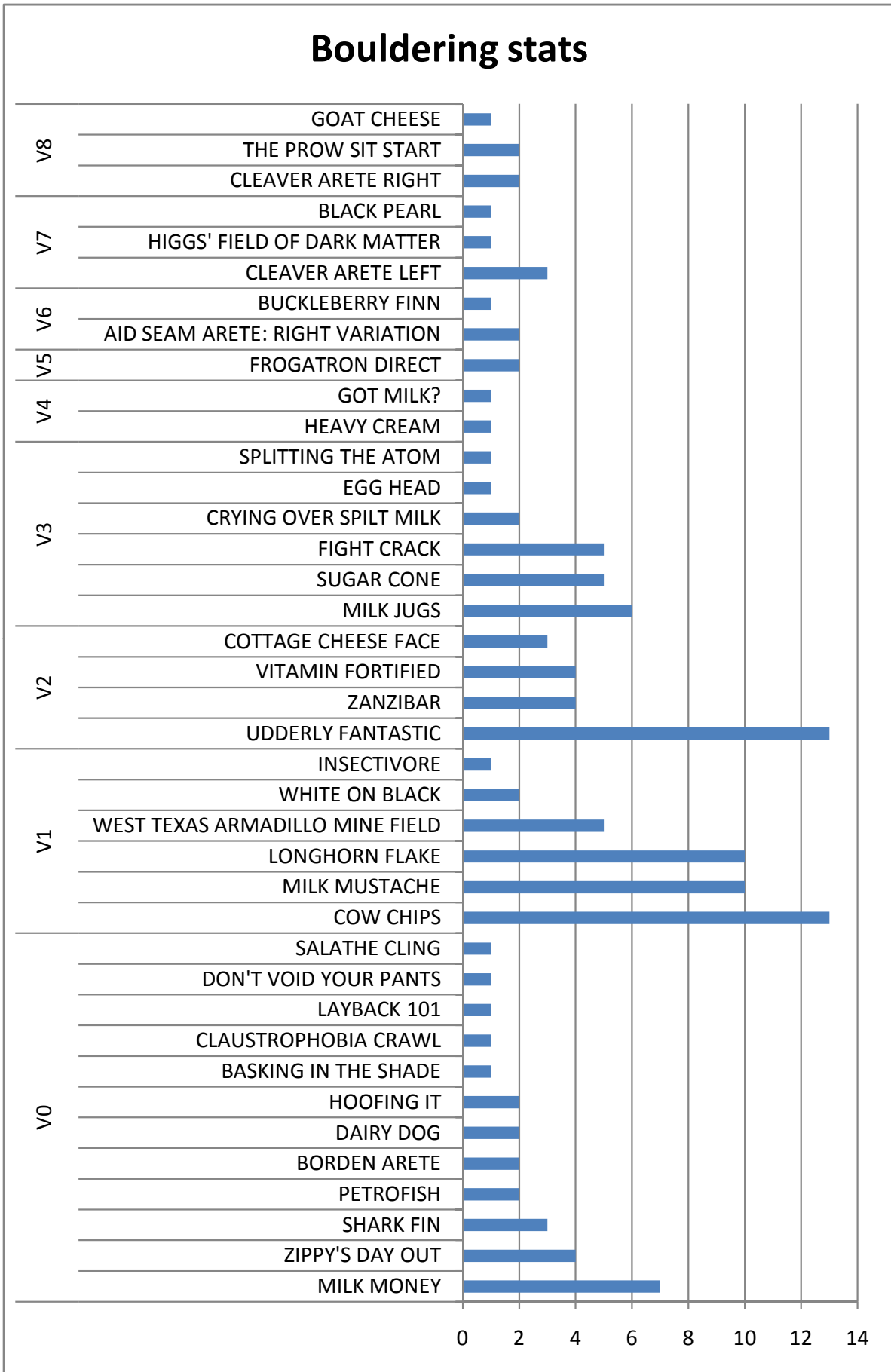
Placements Boulder Problem Lists

Category	Gender	Place	Climber	RouteID	RouteName	Rating	Danger	Attempts	Points	Top 5	Endurance
Open	F	1	marie berry	391	SUGAR CONE	V3	ER1	1	3100	10400	10400
				384	FIGHT CRACK	V3	ER1	2	2900		
				372	VITAMIN FORTIFIED	V2	ER1	2	1900		
				403	UDDERLY FANTASTIC	V2	ER0	1	1500		
				402	LONGHORN FLAKE	V1	ER0	1	1000		
		2	rachel fox	489	ZIPPY'S DAY OUT	V0	ER6	1	1595	6245	6245
				403	UDDERLY FANTASTIC	V2	ER0	2	1500		
				492	HOOFING IT	V0+	ER4	1	1150		
				406	COW CHIPS	V1	ER0	1	1000		
				402	LONGHORN FLAKE	V1	ER0	1	1000		
Open	M	1	joseph gifford	23	BLACK PEARL	V7	ER5	5	12500	44150	57550
				251	CLEAVER ARETE RIGHT	V8	ER1	4	8500		
				365	GOAT CHEESE	V8	ER2	5	8200		
				383	THE PROW SIT START	V8	ER1	3	7850		
				252	CLEAVER ARETE LEFT	V7	ER1	1	7100		
				531	HIGGS' FIELD OF DARK MATTER	V7	ER1	1	7100		
				232	AID SEAM ARETE: RIGHT VARIATION	V6	ER3	1	6300		
		2	danny Aleksavski	251	CLEAVER ARETE RIGHT	V8	ER1	2	8500	36460	36460
				383	THE PROW SIT START	V8	ER1	3	7850		
				252	CLEAVER ARETE LEFT	V7	ER1	6	7100		
				482	BUCKLEBERRY FINN	V6	ER1	3	6710		
				232	AID SEAM ARETE: RIGHT VARIATION	V6	ER3	1	6300		
		3	elliot knowles	374	GOT MILK?	V4	ER1	1	3900	16150	16150
				381	CRYING OVER SPILT MILK	V3	ER4	2	3400		
				391	SUGAR CONE	V3	ER1	1	3100		
				384	FIGHT CRACK	V3	ER1	3	2900		
				367	MILK JUGS	V3	ER1	1	2850		
		4	collier skinn	252	CLEAVER ARETE LEFT	V7	ER1	8	7100	10400	10400
				284	EGG HEAD	V3	ER3	1	3300		
		5	aaron wempe	367	MILK JUGS	V3	ER1	1	2850	9345	10345
				372	VITAMIN FORTIFIED	V2	ER1	1	1900		
				489	ZIPPY'S DAY OUT	V0	ER6	1	1595		
				92	ZANZIBAR	V2	ER0	4	1500		
				403	UDDERLY FANTASTIC	V2	ER0	1	1500		
		6	josh bilberry	406	COW CHIPS	V1	ER0	1	1000	4950	4950
				366	FROGATRON DIRECT	V5	ER3	1	4950		
		6	travis johnson	366	FROGATRON DIRECT	V5	ER3	7	4950	4950	4950
				403	UDDERLY FANTASTIC	V2	ER0	3	1500		
		7	robert ycedo	1013	PETROFISH	V0+	ER0	2	1125	4525	4525
				406	COW CHIPS	V1	ER0	1	1000		
404	MILK MUSTACHE			V1	ER0	1	900				
Intermediate	F	1	louise mallot	13	SPLITTING THE ATOM	V3	ER2	1	3400	14150	21400
				391	SUGAR CONE	V3	ER1	3	3100		
				384	FIGHT CRACK	V3	ER1	1	2900		
				367	MILK JUGS	V3	ER1	1	2850		
				372	VITAMIN FORTIFIED	V2	ER1	2	1900		
				375	COTTAGE CHEESE FACE	V2	ER1	1	1900		
				403	UDDERLY FANTASTIC	V2	ER0	1	1500		
				406	COW CHIPS	V1	ER0	1	1000		
				402	LONGHORN FLAKE	V1	ER0	1	1000		
				404	MILK MUSTACHE	V1	ER0	4	900		
		2	taylor wilcox	3	SALATHE CLING	V0	ER2	2	700	5600	7555
				405	MILK MONEY	V0-	ER0	2	250		
				403	UDDERLY FANTASTIC	V2	ER0	2	1500		
				626	WEST TEXAS ARMADILLO MINE FIELD	V1	ER1	1	1100		
				406	COW CHIPS	V1	ER0	1	1000		
				402	LONGHORN FLAKE	V1	ER0	1	1000		
				614	WHITE ON BLACK	V1	ER0	3	1000		
		3	kelcey lynn	404	MILK MUSTACHE	V1	ER0	1	900	5600	7555
				404	MILK MUSTACHE	V1	ER0	1	900		
				151	SHARK FIN	V0	ER2	1	805		
				405	MILK MONEY	V0-	ER0	2	250		
				403	UDDERLY FANTASTIC	V2	ER0	3	1500		
				626	WEST TEXAS ARMADILLO MINE FIELD	V1	ER1	1	1100		
				406	COW CHIPS	V1	ER0	1	1000		
				402	LONGHORN FLAKE	V1	ER0	1	1000		
				614	WHITE ON BLACK	V1	ER0	3	1000		
		404	MILK MUSTACHE	V1	ER0	1	900	7555			
				151	SHARK FIN	V0	ER2		1	805	
				405	MILK MONEY	V0-	ER0		1	250	

Placements Boulder Problem Lists

Category	Gender	Place	Climber	RouteID	RouteName	Rating	Danger	Attempts	Points	Top 5	Endurance
Intermediate	M	1	forrest williams	381	CRYING OVER SPILT MILK	V3	ER4	1	3400	14150	15650
				391	SUGAR CONE	V3	ER1	1	3100		
				384	FIGHT CRACK	V3	ER1	1	2900		
				367	MILK JUGS	V3	ER1	1	2850		
				372	VITAMIN FORTIFIED	V2	ER1	1	1900		
		92	ZANZIBAR	V2	ER0	2	1500				
		2	craig dye	391	SUGAR CONE	V3	ER1	4	3100	12507.5	15008
				384	FIGHT CRACK	V3	ER1	4	2900		
				367	MILK JUGS	V3	ER1	1	2850		
				494	CLAUSTROPHOBIA CRAWL	V0+	ER5	1	2062.5		
				489	ZIPPY'S DAY OUT	V0	ER6	1	1595		
				403	UDDERLY FANTASTIC	V2	ER0	1	1500		
		406	COW CHIPS	V1	ER0	1	1000				
		3	tyler daniels	362	HEAVY CREAM	V4	ER0	1	4000	10750	10750
				367	MILK JUGS	V3	ER1	1	2850		
				403	UDDERLY FANTASTIC	V2	ER0	1	1500		
				92	ZANZIBAR	V2	ER0	1	1500		
		404	MILK MUSTACHE	V1	ER0	1	900				
		4	scott may	489	ZIPPY'S DAY OUT	V0	ER6	1	1595	6745	6745
				92	ZANZIBAR	V2	ER0	3	1500		
403	UDDERLY FANTASTIC			V2	ER0	2	1500				
492	HOOFING IT			V0+	ER4	1	1150				
406	COW CHIPS	V1	ER0	1	1000						
Recreational	M	1	michael kneeland	375	COTTAGE CHEESE FACE	V2	ER1	1	1900	6600	8500
				403	UDDERLY FANTASTIC	V2	ER0	3	1500		
				626	WEST TEXAS ARMADILLO MINE FIELD	V1	ER1	1	1100		
				629	INSECTIVORE	V1	ER1	3	1100		
				406	COW CHIPS	V1	ER0	1	1000		
				402	LONGHORN FLAKE	V1	ER0	1	1000		
		404	MILK MUSTACHE	V1	ER0	1	900				
		2	shannon ferrell	403	UDDERLY FANTASTIC	V2	ER0	5	1500	5525	6025
				1013	PETROFISH	V0+	ER0	1	1125		
				402	LONGHORN FLAKE	V1	ER0	1	1000		
				406	COW CHIPS	V1	ER0	1	1000		
				404	MILK MUSTACHE	V1	ER0	1	900		
		405	MILK MONEY	V0-	ER0	1	250				
		401	LAYBACK 101	V0-	ER0	1	250				
		3	ben moreland	403	UDDERLY FANTASTIC	V2	ER0	10	1500	5450	6050
				74	DON'T VOID YOUR PANTS	V0+	ER3	1	1050		
				406	COW CHIPS	V1	ER0	2	1000		
				402	LONGHORN FLAKE	V1	ER0	2	1000		
404	MILK MUSTACHE			V1	ER0	1	900				
371	BORDEN ARETE			V0-	ER1	10	350				
405	MILK MONEY	V0-	ER0	2	250						
Youth	M	1	anthony bauta	375	COTTAGE CHEESE FACE	V2	ER1	1	1900	5900	5900
				626	WEST TEXAS ARMADILLO MINE FIELD	V1	ER1	1	1100		
				406	COW CHIPS	V1	ER0	1	1000		
				402	LONGHORN FLAKE	V1	ER0	1	1000		
	404	MILK MUSTACHE	V1	ER0	1	900					
	F	2	alexa beard	626	WEST TEXAS ARMADILLO MINE FIELD	V1	ER1	1	1100	4805	6210
				406	COW CHIPS	V1	ER0	1	1000		
				402	LONGHORN FLAKE	V1	ER0	1	1000		
				404	MILK MUSTACHE	V1	ER0	1	900		
				151	SHARK FIN	V0	ER2	1	805		
				586	BASKING IN THE SHADE	V0	ER2	1	805		
				371	BORDEN ARETE	V0-	ER1	1	350		
				405	MILK MONEY	V0-	ER0	1	250		
3	retta johnson	361	DAIRY DOG	V0-	ER0	1	250	500	500		
		405	MILK MONEY	V0-	ER0	10	250				
M	4	clifford johnson	361	DAIRY DOG	V0-	ER0	1	250	250	250	

Bouldering stats



Where From Stats

State / City	Counts
CA	2
La Habra Heights	1
Whittier	1
TX	31
Austin	10
BULVERDE	1
Driftwood	1
Fort Worth	3
Fredericksburg	1
Houston	1
Huntsville	6
Iubbock	1
Manvel	1
San Antonio	5
spring	1
Grand Total	33

Bouldering Placements

Stone Masters		Open		Advanced		Intermediate		Recreational		Youth	
Men & Women		Women		Women		Women		Women		Men & Women	
terry andrews	7300	lucy jefferson	7220			minna miller	5850	bella cugini	4800	dylan baldrige	4650
bill gooch	5625	cindy becker	7200			tanya kulik	5620				
joe schwartz	5400	claire nelson	6485			erin murdock	3500				
beth kells	4400	shawna west	5770								
barry wilson	3900	carol unsicker	1900								
		Men		Men		Men		Men			
		scott chapman	9700	james faerber	5400	ian steigmeyer	7475	colin kubarych	5950		
		austin howell	9575	dale hentzell	4500	travis junken	6650	dave barre	5500		
		jason syesta	7250	carter wise	2250	chris crabtree	6650	clayton macbride	5200		
		david orchard	5100	tim wise	2050	daniel langdon	6350	jason walton	4650		
		eric quiat	4500			david blankenship	6100	connor davis	4050		
						luke stollings	5925	ian dwyer	4000		
						eric brown	5625	alex reissner	3600		
						joel schopp	5150	josh king	3600		
								jason mann	3400		
								david wearden	2600		

Rope Placements Route Lists

Category	Gender	Place	Climber	RouteID	RouteName	Rating	Ascent Type	Attempts	Points	Top5	Endurance
Stone Masters	M	1	terry andrews	34t	Gravitron	11d X	tr	1	1700		
				34s	Real Gravy	11c R	tr	1	1600		
				34h	French Route	11a	tr	1	1400	7300	7300
				34k	Stranger Than Friction	10b	lead	1	1300		
				34i	Terminal Orogeny	10d R	tr	1	1300		
	M	2	bill gooch	31g	Event Horizon (G)	10b	lead	1	1375		
				23b	Orient Express	9+	lead	1	1150		
				33b	Pro Sweat	9	lead	1	1100	5625	5625
				37a	Butter Ball	8	lead	1	1000		
				37c	Turkey Hooks	8	lead	1	1000		
	M	3	joe schwartz	34s	Real Gravy	11c R	tr	1	1600		
				34h	French Route	11a	tr	1	1400		
				34i	Terminal Orogeny	10d R	tr	1	1300	5400	5400
				34k	Stranger Than Friction	10b	tr	1	1100		
	F	4	beth kells	36l	Walk in the High Country - P1	8	lead	1	1000		
				36m	Walk in the High Country - P1 & 2	7	lead	1	900		
				36i	Knuckle Duster - P1	9	tr	1	900	4400	
				36o	Walk in the High Country - P1 - 4	6	lead	1	800		
				36p	Walk in the High Country - P1 - 5	5	lead	1	800		5900
				36n	Walk in the High Country - P1 - 3	4	lead	1	600		
36j				Knuckle Duster - P1 & 2	5	tr	1	500			
36k	Knuckle Duster - P1 - 3	4	tr	1	400						
M	5	barry wilson	36i	Knuckle Duster - P1	9	lead	1	1100			
			36l	Walk in the High Country - P1	8	tr	1	800			
			36m	Walk in the High Country - P1 & 2	7	tr	1	700	3900		
			36j	Knuckle Duster - P1 & 2	5	lead	1	700			
			36o	Walk in the High Country - P1 - 4	6	tr	1	600			
			36p	Walk in the High Country - P1 - 5	5	tr	1	600			
			36k	Knuckle Duster - P1 - 3	4	lead	1	600			
			36n	Walk in the High Country - P1 - 3	4	tr	1	400			

Rope Placements Route Lists

Category	Gender	Place	Climber	RouteID	RouteName	Rating	Ascent Type	Attempts	Points	Top5	Endurance
Open	F	1	lucy jefferson	48e	Aquatic Anxiety	11a	lead	1	1700	7220	8435
				47c	P.G.13	10d	lead	1	1500		
				48c	Texas Crude	10b	lead	1	1400		
				44a	I Dropped the Ayatollah	10a	lead	1	1320		
				47e	Eat	10a	lead	1	1300		
		46d	Bush Crack	9	lead	1	1215				
		2	cindy becker	24b	Clockwerk Orange	11a R	lead	1	1700	7200	8300
				24d	Agent Orange	11c	tr	1	1600		
				42b	El Carnaval	11b/c	tr	1	1550		
				42a	West Face Amazon Boulder	10a	lead	1	1200		
				23b	Orient Express	9+	lead	2	1150		
		24a	Mystery and Imagination	9	lead	1	1100				
		3	claire nelson	47c	P.G.13	10d	lead	1	1500	6485	6485
				44a	I Dropped the Ayatollah	10a	lead	1	1320		
				47e	Eat	10a	lead	1	1300		
				46d	Bush Crack	9	lead	1	1215		
		48g	Fear of Flying	10b R	tr	1	1150				
		4	shawna west	47c	P.G.13	10d	lead	1	1500	5770	6735
				48g	Fear of Flying	10b R	tr	1	1150		
				44a	I Dropped the Ayatollah	10a	tr	1	1070		
47e	Eat			10a	tr	1	1050				
48j	Little Feat			9+	tr	1	1000				
46d	Bush Crack	9	tr	1	965						
5	carol unsicker	24e	Orange Peel	10a R	tr	1	1000	1900	1900		
		35d	Dome Driver - P1	7	lead	2	900				
Open	M	1	scott chapman	16a	Remote Control	12a	lead	2	2200	9700	9700
				45e	Whimpy Crack	11d	lead	1	2075		
				48d	Shrike	12b R/X	tr	2	2025		
				7a	Spiderman	11c	lead	4	1900		
				48g	Fear of Flying	10b R	lead	1	1500		
		2	austin howell	34t	Gravitron	11d X	lead	1	2300	9575	13675
				20a	Standing Wave	11c	lead	1	1900		
				34s	Real Gravy	11c R	lead	1	1900		
				34l	Pummel Jenga (G)	11b	lead	1	1775		
				24b	Clockwerk Orange	11a R	lead	1	1700		
				34h	French Route	11a	lead	1	1600		
				33c	Sweat	7	lead	1	1000		
				33e	No Sweat	5	lead	1	800		
		35d	Dome Driver - P1	7	tr	1	700				
		3	jason syesta	24b	Clockwerk Orange	11a R	lead	1	1700	7250	8350
				19e	Tonka Toys From Hell	11a	lead	1	1600		
				24d	Agent Orange	11c	tr	1	1600		
				42a	West Face Amazon Boulder	10a	lead	1	1200		
				23b	Orient Express	9+	lead	1	1150		
		24a	Mystery and Imagination	9	lead	1	1100				
		4	david orchard	34h	French Route	11a	tr	1	1400	5100	5100
				34i	Terminal Orogeny	10d R	tr	1	1300		
				34u	Bold Talk For For A One Eyed Fat Man	10d R	tr	1	1300		
				34k	Stranger Than Friction	10b	tr	1	1100		
		5	eric quiat	48j	Little Feat	9+	lead	1	1250	4500	4500
42a	West Face Amazon Boulder			10a	lead	1	1200				
48g	Fear of Flying			10b R	tr	1	1150				
41a	South American Crack			8+	tr	1	900				

Rope Placements Route Lists

Category	Gender	Place	Climber	RouteID	RouteName	Rating	Ascent Type	Attempts	Points	Top5	Endurance		
Advanced	M	1	james faerber	34i	Terminal Orogeny	10d R	tr	1	1300	5400	17900		
				37b	Butter Fingers	9	lead	1	1100				
				37a	Butter Ball	8	lead	1	1000				
				36l	Walk in the High Country - P1	8	lead	1	1000				
				35h	Kracken - P1	8	lead	1	1000				
				35i	Kracken - P1 & 2	8-	lead	1	1000				
				36b	Mark of the Beast - P1 & 2	8	lead	1	1000				
				33c	Sweat	7	lead	1	1000				
				36m	Walk in the High Country - P1 & 2	7	lead	1	900				
				23d	Cave Crack	6	lead	1	900				
				36c	Harder Than it Looks - P1	6+	lead	1	850				
				37d	Windyamp	5	lead	1	800				
				36o	Walk in the High Country - P1 - 4	6	lead	1	800				
				36p	Walk in the High Country - P1 - 5	5	lead	1	800				
				33e	No Sweat	5	lead	1	800				
				23c	Jack Knife	5	lead	1	800				
				33f	Walter Funkite	4	lead	1	700				
				36n	Walk in the High Country - P1 - 3	4	lead	1	600				
		36g	Easier Than it Looks - P1 & 2	6	tr	1	600						
		36f	Easier Than it Looks - P1	5	tr	1	500						
		36h	Easier Than it Looks - P1 - 3	4+	tr	1	450						
				2	dale hentzell	37b	Butter Fingers	9	lead	1	1100	4500	13400
						37a	Butter Ball	8	lead	1	1000		
						37d	Windyamp	5	lead	1	800		
						36l	Walk in the High Country - P1	8	tr	1	800		
						35h	Kracken - P1	8	tr	1	800		
						35i	Kracken - P1 & 2	8-	tr	1	800		
						36G	Easier Than it Looks - P1 & 2	6	lead	1	800		
						36b	Mark of the Beast - P1 & 2	8	tr	1	800		
						33e	No Sweat	5	lead	1	800		
						36m	Walk in the High Country - P1 & 2	7	tr	1	700		
						36f	Easier Than it Looks - P1	5	lead	1	700		
						33f	Walter Funkite	4	lead	1	700		
				33c	Sweat	7	tr	1	700				
				36h	Easier Than it Looks - P1 - 3	4+	lead	1	650				
				36c	Harder Than it Looks - P1	6+	tr	1	650				
		36o	Walk in the High Country - P1 - 4	6	tr	1	600						
		36p	Walk in the High Country - P1 - 5	5	tr	1	600						
		36n	Walk in the High Country - P1 - 3	4	tr	1	400						
		3	carter wise	23b	Orient Express	9+	lead	1	1150	2250	2250		
				24a	Mystery and Imagination	9	lead	1	1100				
		4	tim wise	24a	Mystery and Imagination	9	lead	1	1100	2050	2050		
				23b	Orient Express	9+	tr	1	950				

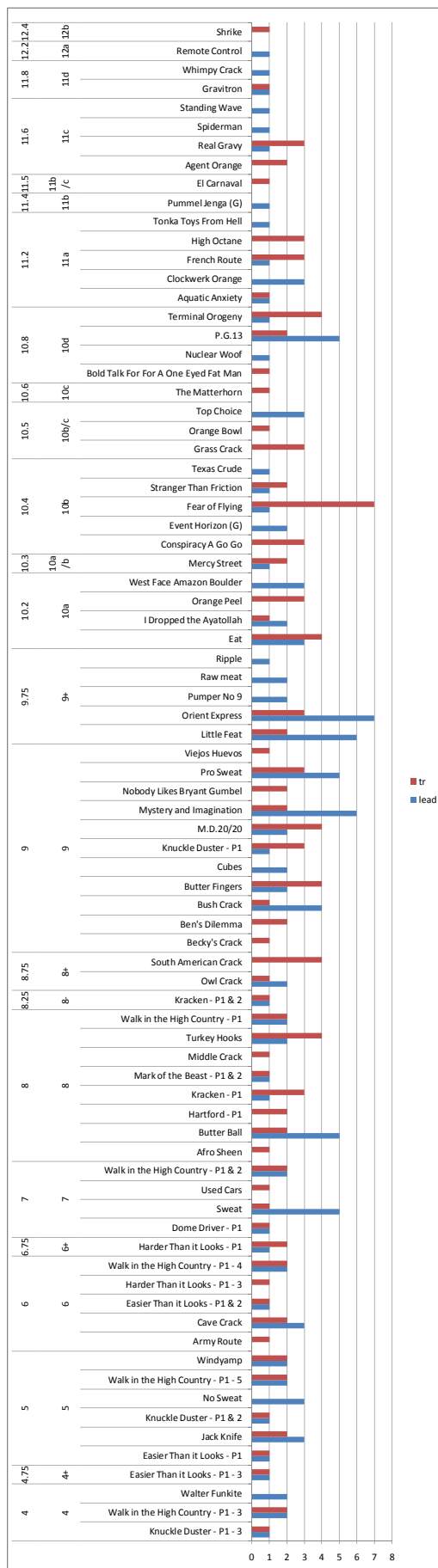
Rope Placements Route Lists

Category	Gender	Place	Climber	RouteID	RouteName	Rating	Ascent Type	Attempts	Points	Top5	Endurance
Intermediate	F	1	minna miller	47c	P.G.13	10d	lead	1	1500		
				48j	Little Feat	9+	lead	1	1250		
				48g	Fear of Flying	10b R	tr	1	1150	5850	5850
				47e	Eat	10a	tr	1	1050		
				41A	South American Crack	8+	TR	1	900		
		2	tanya kulik	47c	P.G.13	10d	tr	1	1300		
				48g	Fear of Flying	10b R	tr	1	1150	5620	5620
				48k	Conspiracy A Go Go	10b	tr	1	1120		
		3	erin murdock	48j	Little Feat	9+	tr	1	1000		
				47c	P.G.13	10d	tr	1	1300		
				48g	Fear of Flying	10b R	tr	1	1150	3500	3500
		47e		Eat	10a	tr	1	1050			
1	ian steigmeyer		46e	Nuclear Woof	10d	lead	1	1675			
			34i	Terminal Orogeny	10d R	lead	1	1600			
		11a	High Octane	11a	tr	3	1450	7475	7475		
		11d	Top Choice	10b/c	lead	1	1450				
		12a	The Matterhorn	10c	tr	1	1300				
2	travis junken	11a	High Octane	11a	tr	1	1450				
		11d	Top Choice	10b/c	lead	2	1450				
		48j	Little Feat	9+	lead	2	1250	6650	6650		
		17c	Pumper No 9	9+	lead	1	1250				
10b		Raw meat	9+	lead	1	1250					
	3	chris crabtree	11a	High Octane	11a	tr	1	1450			
			11d	Top Choice	10b/c	lead	2	1450			
48j			Little Feat	9+	lead	2	1250	6650	6650		
17c			Pumper No 9	9+	lead	1	1250				
10b		Raw meat	9+	lead	1	1250					
	4	daniel langdon	34s	Real Gravy	11c R	tr	1	1600			
			33a	Mercy Street	10a/b	lead	1	1350			
24c			Orange Bowl	10b/c	tr	1	1150	6350	6350		
29d			Grass Crack	10b/c	tr	1	1150				
33b			Pro Sweat	9	lead	1	1100				
5	david blankenship	47c	P.G.13	10d	lead	2	1500				
		47e	Eat	10a	lead	1	1300				
		48j	Little Feat	9+	lead	1	1250	6100	6100		
		48g	Fear of Flying	10b R	tr	1	1150				
		41a	South American Crack	8+	tr	1	900				
6	luke stollings	48e	Aquatic Anxiety	11a	tr	1	1450				
		46a	Cubes	9	lead	1	1215				
		46d	Bush Crack	9	lead	1	1215	5925	5925		
		48k	Conspiracy A Go Go	10b	tr	1	1120				
48a	Afro Sheen	8	tr	1	925						
7	eric brown	31g	Event Horizon (G)	10b	lead	1	1375				
		23b	Orient Express	9+	lead	2	1150				
		33b	Pro Sweat	9	lead	1	1100	5625	5625		
		37a	Butter Ball	8	lead	1	1000				
		37c	Turkey Hooks	8	lead	1	1000				
8	joel schopp	29d	Grass Crack	10b/c	tr	1	1150				
		29a	Owl Crack	8+	lead	1	1150				
		35c	M.D.20/20	9	lead	1	1100	5150	5150		
		29c	Becky's Crack	9	tr	1	900				
29b	Middle Crack	8	tr	1	850						

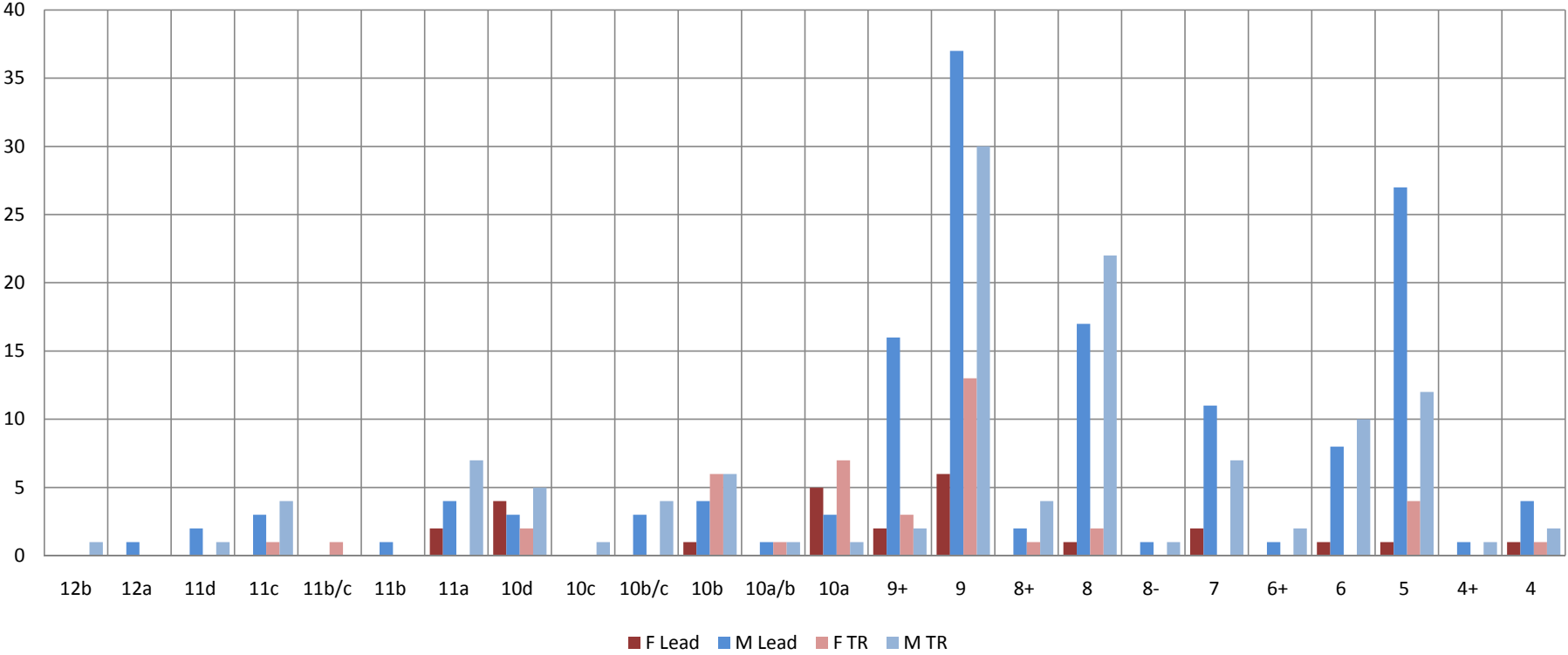
Rope Placements Route Lists

Category	Gender	Place	Climber	RouteID	RouteName	Rating	Ascent Type	Attempts	Points	Top5	Endurance		
Recreational	F	1	bella cugini	33a	Mercy Street	10a/b	tr	1	1050	4800	8850		
				24e	Orange Peel	10a R	tr	1	1000				
				23b	Orient Express	9+	tr	1	950				
				24a	Mystery and Imagination	9	tr	1	900				
				25f	Ben's Dilemma	9	tr	1	900				
				34b	Nobody Likes Bryant Gumbel	9	tr	1	900				
				33b	Pro Sweat	9	tr	1	900				
				37b	Butter Fingers	9	tr	1	900				
				37c	Turkey Hooks	8	tr	1	800				
				37d	Windyamp	5	tr	1	550				
Recreational	M	1	colin kubarych	48j	Little Feat	9+	lead	1	1250	5950	7050		
				46a	Cubes	9	lead	1	1215				
				46d	Bush Crack	9	lead	1	1215				
				35a	Ripple	9+	lead	1	1150				
				48k	Conspiracy A Go Go	10b	tr	1	1120				
						35c	M.D.20/20	9	lead	1	1100		
		2	dave barre	23b	Orient Express	9+	lead	1	1150	5500	6950		
				29d	Grass Crack	10b/c	tr	1	1150				
				24a	Mystery and Imagination	9	lead	1	1100				
				33b	Pro Sweat	9	lead	1	1100				
				33c	Sweat	7	lead	1	1000				
						23c	Jack Knife	5	lead	1	800		
						23d	Cave Crack	6	tr	1	650		
		3	clayton macbride	29a	Owl Crack	8+	lead	1	1150	5200	6000		
				33b	Pro Sweat	9	lead	1	1100				
				33a	Mercy Street	10a/b	tr	1	1050				
				33c	Sweat	7	lead	1	1000				
				23d	Cave Crack	6	lead	1	900				
						23c	Jack Knife	5	lead	1	800		
		4	jason walton	23b	Orient Express	9+	lead	1	1150	4650	4650		
				24a	Mystery and Imagination	9	lead	1	1100				
				33c	Sweat	7	lead	1	1000				
				23d	Cave Crack	6	lead	1	900				
				23c	Jack Knife	5	tr	1	500				
		5	connor davis	35c	M.D.20/20	9	tr	1	900	4050	4050		
				36i	Knuckle Duster - P1	9	tr	1	900				
				35h	Kracken - P1	8	tr	1	800				
				35f	Hartford - P1	8	tr	1	800				
				36c	Harder Than it Looks - P1	6+	tr	1	650				
		6	ian dwyer	35c	M.D.20/20	9	tr	1	900	4000	4000		
				36i	Knuckle Duster - P1	9	tr	1	900				
				35f	Hartford - P1	8	tr	1	800				
				35h	Kracken - P1	8	tr	1	800				
				36e	Harder Than it Looks - P1 - 3	6	tr	1	600				
		7	alex reissner	33b	Pro Sweat	9	tr	3	900	3600	3600		
				29a	Owl Crack	8+	tr	1	900				
				23d	Cave Crack	6	tr	1	650				
				25a	Army Route	6	tr	1	650				
				23c	Jack Knife	5	tr	1	500				
		8	josh king	37a	Butter Ball	8	lead	1	1000	3600	3600		
				37b	Butter Fingers	9	tr	1	900				
				35c	M.D.20/20	9	tr	2	900				
				37c	Turkey Hooks	8	tr	1	800				
		9	jason mann	37b	Butter Fingers	9	tr	1	900	3400	3400		
				35c	M.D.20/20	9	tr	1	900				
				37a	Butter Ball	8	tr	2	800				
						37c	Turkey Hooks	8	tr	1	800		
		10	david wearden	44e	Viejos Huevos	9	tr	1	950	2600	2600		
41a	South American Crack			8+	tr	1	900						
44d	Used Cars			7	tr	1	750						
Youth	M	1	dylan baldrige	24e	Orange Peel	10a R	tr	1	1000	4650	8600		
				23b	Orient Express	9+	tr	1	950				
				24a	Mystery and Imagination	9	tr	1	900				
				25f	Ben's Dilemma	9	tr	1	900				
				34b	Nobody Likes Bryant Gumbel	9	tr	1	900				
				33b	Pro Sweat	9	tr	1	900				
				37b	Butter Fingers	9	tr	1	900				
				37a	Butter Ball	8	tr	1	800				
				37c	Turkey Hooks	8	tr	1	800				
				37d	Windyamp	5	tr	1	550				

Route Stats



M/F, TR/Lead Stats



Where From Stats

State / City	Counts
Colorado	1
lake george	1
Illinois	1
st charles	1
Oklahoma	1
norman	1
Texas	60
Austin	38
cedar park	1
coppell	1
Del Rio	1
Del Valle	1
Flower Mound	1
Garden Ridge	2
houston	5
new brunfels	1
plano	1
richmond	1
san angelo	2
San Antonio	1
Seabrook	1
sugar land	1
tyler	1
wimberly	1
Grand Total	63